

PART OF N. 1/2 OF SECTION 22, T.6N., R.1W., S.L.B.&M.

ROLLING HILLS ADDITION NO. 7

LOTS 6-10 & 19

TAXING UNIT: 25

IN OGDEN CITY

SCALE: 1" = 50'

SEE PAGE 55

SEE PAGE 45

SEE PAGE 140

CORP OF THE PRESIDING BISHOP
OF THE CHURCH OF JESUS CHRIST OF LDS
131470006

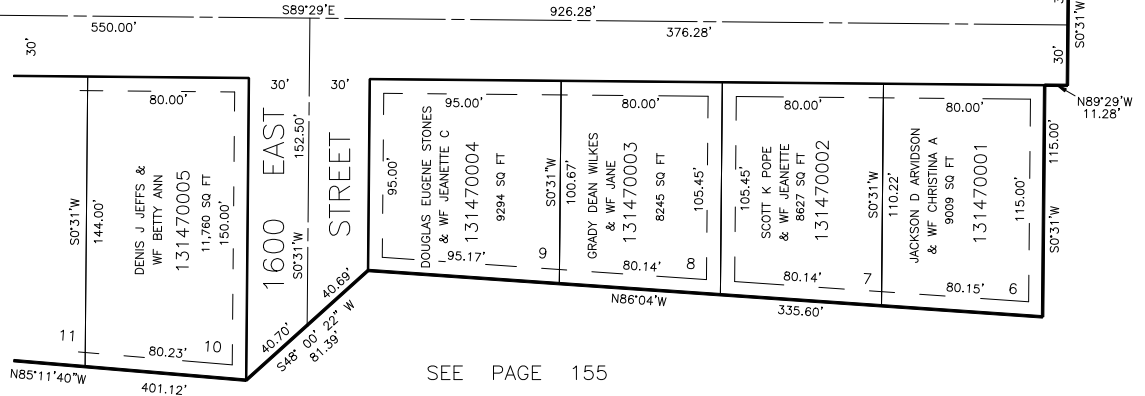
4.02 AC±

13TH STREET

SEE PAGE 146

FOR COMPLETE ENG DATA SEE
ORIGINAL DEDICATION PLAT IN
BOOK 18, PAGE 78 OF RECORDS.

7' UTILITY & DRAINAGE EASEMENTS EACH
SIDE OF PROPERTY LINES AS INDICATED
BY DASHED LINES EXCEPT AS OTHERWISE
SHOWN.



SEE PAGE 155